



REC# : 752795

RECORDED 5/8/2019 AT 1:18 PM BK# 2620 PG# 1837  
Debra K. Lee, CLERK OF LARAMIE COUNTY, WY PAGE 1 OF 1

# STATE OF WYOMING CORNER RECORD

(In compliance with the CORNER PERPETUATION AND FILING ACT, Wyoming Statutes, 1997 Section 33-29-140, et. seq., and the Rules and Regulations of the Board of Registrations for Professional Engineers and Professional Land Surveyors)

## EAST QUARTER CORNER SECTION 1, T. 18 N., R. 63 W., 6TH P.M., LARAMIE COUNTY, WYOMING

GLO: SET A SANDSTONE 18X12X3, 12 IN. DEEP, MARKED 1/4 ON NORTH SIDE FOR 1/4 SEC. COR.

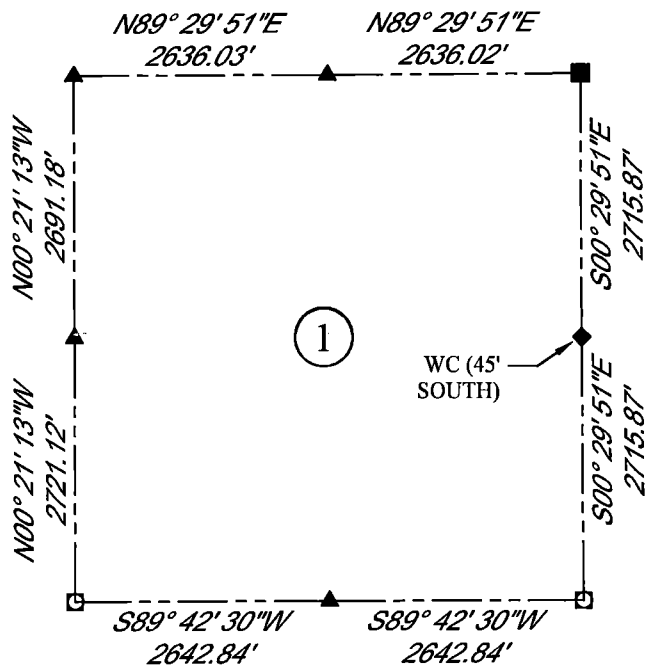
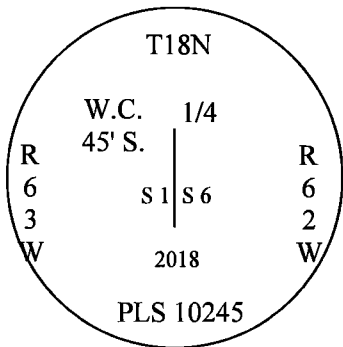
FOUND: NOTHING. SET ALUMINUM CAP AT PROPORTIONATE (SINGLE) DISTANCE.



SCALE: NONE

NORTH DETERMINED BY G.P.S OBSERVATIONS

SET 3.25" ALUMINUM CAP ON #5 REBAR, AT SURFACE STAMPED AS SHOWN. WITNESS CORNER, TRUE CORNER FALLS IN/OUT ON SOUTH EDGE OF THE CREEK. SET 2 MAG NAILS IN FENCE POST APPROXIMATELY 10' WESTERLY.



### LEGEND:

- FOUND BLM CAP
- FOUND USFS CAP
- FOUND STONE
- FOUND PRIVATE MONUMENT
- ◆ CALCULATED POSITION
- ▲ SET MONUMENT (LS10245)
- SECTION LINE

DATE OF FIELD WORK: 9/25/2018 OFFICE REFERENCE: MERIDEN

### CROSS INDEX DIAGRAM

	1	2	3	4	5	6	7	8	9	10	11	12	13	14	15	16	17	18	19	20	21	22	23	24	25	
A																										
B																										
C		6																								
D																										
E																										
F																										
G		7																								
H																										
J																										
K																										
L		18																								
M																										
N																										
O																										
P		19																								
Q																										
R																										
S																										
T		30																								
U																										
V																										
W																										
X																										
Y		31																								
Z																										
	1	2	3	4	5	6	7	8	9	10	11	12	13	14	15	16	17	18	19	20	21	22	23	24	25	

WOOD  
2615 AVIATION DRIVE  
SHERIDAN, WY 82801  
PH: 307-675-6400



THIS CORNER RECORD WAS PREPARED BY ME OR UNDER MY DIRECTION AND SUPERVISION, SEAL AND SIGNATURE

